

Release Notes

Contents

<i>Release Purpose</i>	1
<i>Pre-Installation Recommendations</i>	1
<i>Platform Compatibility</i>	1
<i>Known Issues</i>	2
<i>Resolved Issues</i>	2
<i>Troubleshooting</i>	3

Release Purpose

Dell SonicWALL Global VPN Client 4.9 provides the following updates:

- Improved support for client machines running Windows 8 and 8.1
- Removal of the Office Gateway connection type from the New Connection Wizard; this option was used to create WiFi connections over IPsec, and is not needed with secure wireless access points
- Refreshed user interface

Pre-Installation Recommendations

Dell SonicWALL strongly recommends you follow these steps before installing the Global VPN Client (GVC) 4.9 client:

- Dell SonicWALL GVC encounters run time conflicts when it co-exists with any 3rd party IPsec VPN clients. Uninstall all IPsec VPN clients prior to installing Dell SonicWALL GVC.
- For Vista systems, it is required that you update device drivers for each Network Adapter card to the latest available versions. You can check the NIC vendor Web site for these updates.

Platform Compatibility

Dell SonicWALL GVC 4.9 supports both 32-bit and 64-bit client machines.

Supported Windows Clients:

The following versions of Microsoft Windows are supported by Dell SonicWALL GVC 4.9:

- Windows 8.1
- Windows 8.0
- Windows 7
- Windows Vista
- Windows XP



Note: The following operating systems and platforms are **not** supported:

- ARM based devices, including the ARM based Surface tablet
- The Preview version of the Windows 8.1 Tablet OS
- Windows 2000, Windows NT 4.0, Windows ME, Windows 98, or Windows 95

Release Notes

Supported SonicOS Firmware:

The Dell SonicWALL GVC 4.9 release is compatible with the following firmware releases:

- SonicOS Enhanced 2.0.0.2 and above
- SonicOS Standard 2.0.0.2 and above

Supported Dell SonicWALL Appliances:

The Dell SonicWALL GVC 4.9 release supports the following Dell SonicWALL appliance platforms:

- SuperMassive 9000 series
- SuperMassive 10,000 series
- NSA E-Class series
- NSA series
- TZ series

Known Issues

The following is a known issue in the Dell SonicWALL GVC 4.9 release.

Symptom	Condition / Workaround	Issue
The SHA256 and AES-XCBC authentication modes are not supported by Global VPN Client.	Occurs when SHA256 or AES-XCBC is selected on the Dell SonicWALL appliance as the authentication mode.	125750

Resolved Issues

The following issue is resolved in the Dell SonicWALL GVC 4.9 release:

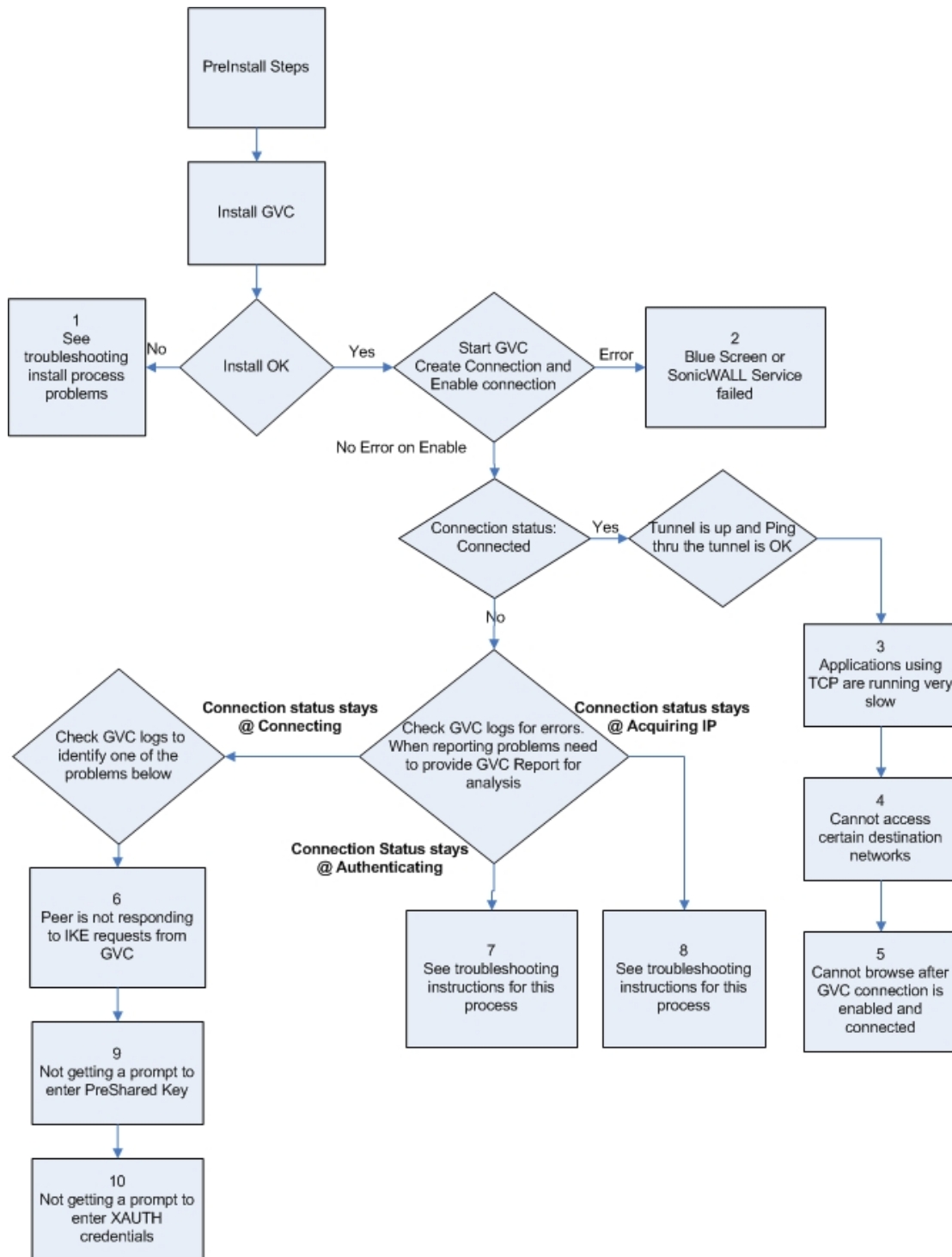
Symptom	Condition / Workaround	Issue
Global VPN Client installation has problems on Windows 8 and 8.1.	Occurs when attempting to install GVC on Windows 8 or 8.1 client machines.	None

Release Notes

Troubleshooting

The following is the troubleshooting procedure for the Dell SonicWALL GVC 4.9 release:

Trouble Shooting Process for GVC:



Release Notes

Note: If you need to debug run time problems after a successful Dell SonicWALL GVC install, refer to the Dell SonicWALL GVC logs to detect the error condition(s). Some problems may also require information from the firewall logs. Reporting Dell SonicWALL GVC run time problems to technical support requires that you submit Dell SonicWALL GVC and/or Firewall logs for analysis.

Detailed troubleshooting processes are explained for the following issues:

<i>Process 1: Debug Install Issue</i>	4
<i>Process 2: Post-Install Errors</i>	5
<i>Process 3: TCP Applications on Vista are Slow</i>	6
<i>Process 4: Cannot Access Certain Destination Networks</i>	6
<i>Process 5: Cannot Browse the Internet after GVC Connection is Enabled and Connected</i>	7
<i>Process 6: Peer is not Responding to ISAKMP Requests from GVC; Check GVC Logs to Verify</i>	7
<i>Process 7: Stuck on Authenticating when GVC Connection is Enabled</i>	7
<i>Process 8: Failed to Obtain DHCP Lease for the Virtual Adapter</i>	8
<i>Process 9: Not Getting a Prompt to Enter a PreShared Key (PSK)</i>	9
<i>Process 10: Not Getting a Prompt to Enter XAUTH Credentials</i>	9

Process 1: Debug Install Issue

Note: If Dell SonicWALL GVC was an upgrade install, then first uninstall GVC, reboot your computer and then run setup again. If you encounter an error, follow the troubleshooting instructions:

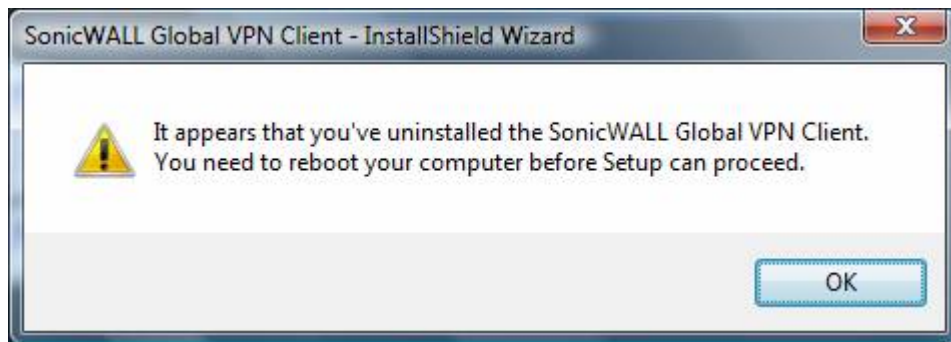
1. Blue Screen during Install Process:

If you get a blue screen after the upgrade to GVC 4.9, provide the following file **%SystemRoot%\Minidump.dmp** (%SystemRoot% is usually C:\Windows) to Tech support in order to troubleshoot further.

For someone who can reproduce the symptom, choosing 'Kernel memory dump' could be of even more help as it should have more information. To get detailed memory dump need to set the following;

Start > Computer, right-click on **Computer** and select **Properties**. Choose **Advanced System Settings** and then choose **Settings** under Startup and Recovery. The settings are under the System Failure section. The dump file will by default be written to the “%SystemRoot%\MEMORY.DMP” file.

2. Global VPN Client install fails due to the following error:



This error could happen in the following cases:

- Installing Dell SonicWALL GVC without a reboot after GVC uninstall.
- Hard reset during the install operation.
- Dell SonicWALL GVC install is an upgrade from an earlier GVC Beta version.

Release Notes

Reboot your computer and then run setup again. If it still results in the same error, then do the following:

- A. Right-click on the **Command Prompt** icon and select **Run as Administrator**.
- B. Change directory to **%SystemRoot%\system32\drivers** (%SystemRoot% is C:\Windows).
- C. Type **net stop SWIPsec.sys**. You may see either success or failure returned.
- D. Rename **SWIPsec.sys** to **SWIPsec.sys.bak** (if **SWIPsec.sys** exists in this directory).

Now run setup again and install Dell SonicWALL GVC.

3. GVC Install is stuck while installing the SonicWALL Virtual Adapter:

You may have to do a hard reset if the installation is stuck during the install of the Virtual Adapter. After power up, uninstall Dell SonicWALL GVC and reboot your computer. Now verify that SonicWALL Virtual Adapter does not exist. Go to **Start > Control Panel > Network and Internet > Network and Sharing Center > Manage Network Connections** page. If it still exists after the Dell SonicWALL GVC uninstall, it is most likely due to registry corruption during the hard reset.

Manually uninstall SonicWALL Virtual Adapter as follows:

- A. Go to **Start > Computer**, right-click on **Computer** and select **Properties**.
- B. Choose **Device Manager** and then choose **Network adapters**.
- C. Right-click **SonicWALL VPN Adapter** and uninstall this adapter.
- D. Select the **Delete the driver software for this device** checkbox.
- E. Change to the **%SYSTEMROOT%\System32\Drivers** directory and delete **SWVNIC.SYS**.
- F. Reboot your machine.
- G. After power up, install Dell SonicWALL GVC again.

4. Dell SonicWALL GVC Install fails due to following error:

“SWGVC SVC Module has Stopped Working”

This error indicates that the installer failed to install Dell SonicWALL services. Run Dell SonicWALL GVC installer for the second time.

Process 2: Post-Install Errors

These problems are seen after the successful install:

- Blue Screen
- Failed to run Dell SonicWALL service.

Blue Screen:

Network Adapter Card drivers: Check if you are using the latest driver for each Network Adapter card installed on your computer. If it is not, then you have to first upgrade to this latest version of the driver and then run Dell SonicWALL GVC again.

Trend Micro firewall: If you have installed this client based firewall, then check to make sure it is the latest version from the Vendor Website. If it is and you are still getting Blue screen, then disable the Trend Micro Common firewall driver binding from the properties of the Virtual adapter. On Vista, go to **Start > Control Panel > Network and Internet > View network status and tasks > Manage network connections**. Select **SonicWALL Virtual adapter** and right-click to select properties and then disable **Trend Micro Common firewall driver binding**.

If the blue screen still persists, then you need to provide the following to tech support for further investigation:

After the upgrade to SonicWALL GVC 4.9, if you get a blue screen, provide the following file **%SystemRoot%\Minidump** (%SystemRoot% is usually C:\Windows) to Tech support in order to troubleshoot further.

Release Notes

For someone who can reproduce the symptom, choosing 'Kernel memory dump' could be of even more help as it should have more information. To get detailed memory dump need to set the following:

Start > Computer, right-click on **Computer** and select **Properties**. Choose **Advanced system settings** and then choose **Settings** under 'Startup and Recovery'. The settings are under the 'System failure' section. The dump file will by default be written to the %SystemRoot%\MEMORY.DMP file.

Failed to run SonicWALL Service:

Open a DOS command prompt window by right-clicking on the icon and select 'Run as administrator'. Change directory to Dell SonicWALL GVC install directory, (Usually \Program Files\SonicWALL\SonicWALL Global VPN Client) and type the following commands.

- Net stop SWGVCSVC
- Net start SWGVCSVC

Process 3: TCP Applications on Vista are Slow

The issue is caused by Windows Scaling being handled incorrectly by the firewall device. To manually disable windows scaling, run the following command from the command prompt:

"netsh interface tcp set global autotuning=disabled"

Refer to the following URL for more information on this problem:

<http://support.microsoft.com/kb/934430>

Process 4: Cannot Access Certain Destination Networks

1. From Dell SonicWALL GVC menu select, **File > Properties > Status** tab. In the connection section, select the **Details** button. Verify the destination network you are trying to reach, exists in the Destination Proxy IDs list. The information is user specific and can be controlled in the Group VPN Policy on the firewall. This verification can also be done from a Dell SonicWALL GVC report and can be found under the following heading:
 - i. Destination Networks
 - ii. -----
 - iii. 192.168.0.0/255.255.255.0/BOOTPS: Phase 2 Complete
 - iv. 192.168.0.0/255.255.255.0/Any: Idle

This destination proxy ID list is generated on a per user basis so it is possible the user access list is missing the required destination networks.

2. If Step 1 is verified and it still fails, then verify the route to and from the destination network is correct on the firewall side. This may require a packet capture either on the Dell SonicWALL appliance or an external packet capture on the host you are trying to reach.

Release Notes

Process 5: Cannot Browse the Internet after GVC Connection is Enabled and Connected

Generate Dell SonicWALL GVC report (Help->Generate Report menu) and verify if the policy is a tunnel all policy. Check that the default route points to the correct interface. If the policy is tunnel all, then a packet capture on the Dell SonicWALL appliance should provide information if the packet is dropped at the firewall due to an incorrectly configured or unavailable rule to route the Internet packets. In order to help trace this, start a continuous ping from SonicWALL GVC client to 4.2.2.2 and use the packet capture utility on the firewall to trace the packet destination.

Process 6: Peer is not Responding to ISAKMP Requests from GVC; Check GVC Logs to Verify

1. Verify host running Dell SonicWALL GVC application has Internet connectivity and can browse the Internet. If not, then fix this problem and then go to Step B.
2. Verify the Peer gateway is running and the <zone> Group VPN policy is enabled. If you have other Dell SonicWALL GVC clients connecting to the same firewall on the same interface of the firewall, then this is not a problem. Go to Step C.
3. Dell SonicWALL GVC works from certain locations and this error message only shows up when you are behind certain NAT device. There are two possible scenarios.

NAT device is blocking IKE traffic from Dell SonicWALL GVC (Vista OS) since it is not using defined UDP source port (500) for IKE. This is currently only a problem with GVC running on Vista. In order for Dell SonicWALL GVC to use the defined IKE source port, start GVC by right-clicking on the icon and then select 'Run as administrator'. If GVC still cannot connect, then go to Step D

4. It is possible that this NAT device is blocking IKE traffic and so requires a rule (policy) to allow IKE packets from Dell SonicWALL GVC.

To verify if the IKE traffic from SonicWALL GVC is reaching the Peer gateway, use the event logs (Network Debug Category enabled) or packet capture on the Dell SonicWALL appliance. If the Peer gateway does not get the IKE packets, then it is the NAT device in the middle or ISP that is dropping the IKE packets. Consult the NAT device manual or ISP to troubleshoot this problem.

Process 7: Stuck on Authenticating when GVC Connection is Enabled

Important: Check Dell SonicWALL GVC logs to get the state of the connection progress. Most likely causes:

- Group VPN Configuration error on the Firewall. Check if the user has VPN access list assigned. (With or Without XAUTH this is required)
- Dell SonicWALL GVC logs show Phase 2 error. This should never happen with Dell SonicWALL GVC. Delete the connection and create a new one and then try to connect again. The user has to enter the preshared key if the firewall GroupVPN setting "Use Default Key for Simple Client Provisioning" is not enabled. They will also enter their XAUTH credentials as they normally do on new connections, if the firewall XAUTH checkbox is on for GroupVPN
- Dell SonicWALL GVC logs shows Phase 2 error. This should never happen with Dell SonicWALL GVC. Delete the connection and create a new one and then try to connect again. The user has to enter their XAUTH credentials and the preshared key if default provisioning key is not enabled.
- Check if the firewall has license for Dell SonicWALL GVC connection. If it has, then check if the number of concurrent GVC connections does not exceed the licensed number.

Release Notes

Process 8: Failed to Obtain DHCP Lease for the Virtual Adapter

Note: Try a reboot first. If that does not help follow these steps:

1. Verify that no 3rd party IPsec VPN clients are installed on your computer. Uninstall any existing IPsec VPN clients (including Dell SonicWALL GVC), reboot, and then install GVC again.
2. Dell Wireless WLAN 4.10+ wireless network driver includes VLAN Priority Support which conflicts with getting a DHCP lease for the SonicWALL Virtual Adapter. Check if VLAN Priority Support is enabled. If it is, disable it by performing the following steps:
 - A. Right-click **My Computer** on the desktop and click **Properties**.
NOTE: If there is no **My Computer** icon on the desktop, click **Start** and right-click **My Computer** on the right column of the **Start** menu.
 - B. When the **System Properties** window appears, click the **Hardware** tab and click **Device Manager**.
 - C. When the **Device Manager** window appears, click the <+> next to **Network Adapters** and double-click **Dell Wireless WLAN Adapter**.
 - D. When the **Dell Wireless WLAN Adapter Properties** window appears, click the **Advanced** tab.
 - E. Scroll down to **VLAN Priority Support** and click to highlight.
 - F. Select **Disable** from the drop-down menu under the **Value:** field.
 - G. Click **OK** to close the **Dell Wireless WLAN Adapter Properties** window.
 - H. Click the **X** button in the upper right-hand corner of the **Device Manager** window to close it.
1. Verify DNE binding is enabled for the SonicWALL Virtual Adapter. Go to Start > Control Panel > Network and Internet > Network and Sharing Center > Manage network connections page. Select SonicWALL Virtual Adapter and right-click on properties. On the properties page verify Deterministic Network Enhancer binding is enabled.
2. If this is a new setup, verify configuration on the firewall. Enable Network Debug category logs to show the DHCP transaction messages. Based on the logs you can determine if the DHCP request is received from the client and if the DHCP server responded to this request. If it is an already working setup, and only SonicWALL GVC on Vista is having this problem, then go to step B.
3. If you are running a client-based software firewall on the Vista machine, check if the version is Vista compatible. If it is not, then upgrade to the latest version. If it does not work after the upgrade, then add a rule to allow TCP/UDP port 67/68. If this does not fix the problem, then go to step C.
Note: There were numerous problems reported with Norton Internet Security Suite. If you have this software installed, then the final try is to uninstall Norton and reboot your computer and then try again
4. Disable the software firewall completely and then try again. If this does not work, then go to Step E.
5. Change the default setting for this connection for NAT Traversal from Automatic to Disabled. To select the connection, go to File > properties > Peer > Edit tab to change this setting.

Release Notes

Process 9: Not Getting a Prompt to Enter a PreShared Key (PSK)

This could happen due to process 6 error condition above. If that is not the case, then PSK prompt is only available if the Simple provisioning key is not enabled on the <zone> Group VPN Policy. After the PSK is entered for the first time, it is saved in the encrypted configuration file. Unless the PSK in Group VPN policy is changed the PSK is never prompted again.

Process 10: Not Getting a Prompt to Enter XAUTH Credentials

This could happen due to process 6 error condition above. If that is not the case, then XAUTH prompt is only available if it is enabled on the <zone> GroupVPN Policy. XAUTH credentials are allowed to be cached in the encrypted configuration file only if it is allowed on the <zone> Group VPN policy.

Last updated: 1/2/2014