

# Release Notes

## SonicWALL CDP On-Demand Video:

<http://www.demosondemand.com/clients/sonicwall/001/page/demos.asp#productdemos>

## Contents

Supported Platforms.....	1
Known Issues .....	3
Resolved Issues .....	5
What's New in SonicWALL CDP 6.1? .....	8
What's New in SonicWALL CDP 6.0? .....	18
Upgrading to SonicWALL CDP 6.0 and 6.1 .....	21
Related Technical Documentation .....	21

SonicWALL recommends operating the latest software available on [www.mysonicwall.com](http://www.mysonicwall.com). Log in to MySonicWALL to download the latest SonicWALL Continuous Data Protection (CDP) appliance firmware, CDP Agent software, and online technical documentation. For more information on creating a MySonicWALL account and registering your new appliances, refer to the *SonicWALL CDP Getting Started Guide* for your model.


## Supported Platforms

For best results, SonicWALL recommends using this release in the following environment:

- **CDP Appliance version 6.1.3.22**
- **Portal 6.0.3.70**
- **Windows Agent 6.1.1.43**
- **Mac Agent 6.1.0.13**
- **Linux Agent 6.1.0.13**

The SonicWALL CDP 6.1 firmware release is supported on the following SonicWALL CDP appliance platforms:

- **SonicWALL CDP 210 / 220 / 5040B / 6080B**
- **SonicWALL CDP 110 / 210 / 5040 / 6080**
- **SonicWALL CDP 1440i / 2440i / 3440i / 4440i**

 **Note:** The SonicWALL CDP 210 is available both as a generation 3 and a generation 4 platform.

The SonicWALL CDP 6.1 *client* applications are supported on the following 32-bit and 64-bit platforms with the latest Service Packs:

- **Windows 7**
  - Home
  - Professional
  - Enterprise
  - Ultimate
- **Windows Vista**
  - Home
  - Business
  - Enterprise
  - Ultimate
- **Windows XP**
  - Home (32-bit only)
  - Professional

# Release Notes

The SonicWALL CDP 6.1 *server* applications are supported on the following 32-bit and 64-bit platforms with the latest Service Packs:

- **Windows Server 2008**
  - **Standard Edition**
  - **Enterprise Edition**
  - **Small Business Server (64-bit only)**
- **Windows Server 2003**
  - **Standard Edition**
  - **Enterprise Edition**
  - **Small Business Server (32-bit only)**

The SonicWALL CDP 6.1 release supports the following versions of Microsoft Exchange with the latest Service Packs:

- **Exchange 2010 (SP1 required for User Mailbox)**
- **Exchange 2007**
- **Exchange 2003**



**Note:** Exchange 2003 and 2007 require that you configure authentication with user “cdpadmin” and then login to the agent system as cdpadmin to restore User Mailboxes. On Exchange 2010, configure authentication with “Administrator” and login as Administrator to restore.

The SonicWALL CDP 6.1 release supports the following Microsoft applications:

- **SharePoint 2010**
- **Outlook Express**
- **Outlook**

The SonicWALL CDP 6.1 release supports the following 32-bit and 64-bit versions of Microsoft SQL Server:

- **SQL Server 2008**
- **SQL Server 2005**

The SonicWALL CDP 6.1 release supports the following 32-bit versions of Apple Mac OS X:

- **Mac OS X Server Snow Leopard**
- **Mac OS X Server 10.5**
- **Mac OS X 10.6 Snow Leopard**
- **Mac OS X 10.5 Leopard**

The SonicWALL CDP 6.1 release supports the following 32-bit Linux platforms:

- **Red Hat Enterprise Linux 5.2**
- **CentOS 5.3**
- **Fedora 8, 10, 13**
- **OpenSUSE 11.1**
- **Debian 5.0**
- **Ubuntu 10.04**

## Browser Requirements – Screen Resolution:

Recommended screen resolution when using the SonicWALL CDP Web management interface is 1280x1024 or higher. If resolution is lower, a warning is displayed after logging into the SonicWALL CDP Web management interface. All functionality remains intact, but you may need to use the scrollbars to view the entire window and access all options and buttons.

# Release Notes

## Known Issues

This section contains a list of known issues in the SonicWALL CDP 6.1 release.

### ***Appliance User Interface***

Symptom	Condition / Workaround	Issue
Column headings in email reports are not complete.	Occurs when viewing the Agents Summary table in an email report generated by the appliance. The Total Size heading should be "CDP Total Size", and the Size on Disk heading should be "CDP Size on Disk".	107062
The Web UI login page displays boxes in place of Chinese and Japanese characters for the language selection.	Occurs when logging into the CDP appliance Web UI from a Windows XP system using Internet Explorer. The characters are displayed correctly when using Windows XP with Firefox or Windows 7 with Internet Explorer. <b>Workaround:</b> In the IE browser on the XP system, open the <b>Tools</b> menu and click <b>Internet Options</b> . On the <b>General</b> tab in the <b>Appearance</b> section, click the <b>Fonts</b> button. In Fonts window, in the <b>Language script</b> drop-down list, select <b>Chinese Simplified</b> . Under <b>Webpage font</b> , select the only option, <b>Arial Unicode MS</b> . Click <b>OK</b> . In the Internet Options window, click <b>OK</b> again.	102915

### ***Agent Software***

Symptom	Condition / Workaround	Issue
Adobe AIR installation can fail on agent machines running Debian Linux, impacting the proper functioning of the SonicWALL CDP Agent user interface.	Occurs when installing the SonicWALL CDP Agent on a machine running Debian Linux. <b>Workaround:</b> Uninstall Adobe AIR from the system, then install the CDP Agent. The Agent will install Adobe AIR.	106723

### ***Installation / Upgrade / Import Settings***

Symptom	Condition / Workaround	Issue
Upgrading to CDP version 6.1 does not complete or refresh the page, but displays the message "Please Wait".	Occurs when upgrading from 6.0.5.77 or from 6.1.2.19 to a newer version of 6.1. Occurs on Internet Explorer 8 and 9, and on Firefox 6.0. <b>Workaround:</b> Try the upgrade again. If tried a few times, the upgrade will succeed.	106519
Exporting preferences/settings and then importing them to a factory default appliance sometimes only imports network settings, but not custom policies.	Occurs when the preferences are exported from the System > Settings page, and then imported on an unregistered CDP appliance with factory default settings. This can affect import of files/folders objects, schedules, backup tasks, admin policies, data management dataset objects, archive tasks, and offsite settings.	106101

# Release Notes

## System State

Symptom	Condition / Workaround	Issue
Restoring a CDP 6.0 System State backup to a machine running the CDP 6.1 Agent results in the error "HttpRequest Error" after rebooting.	<p>Occurs due to a design change in CDP 6.1 involving changed entries in the Windows Registry. CDPAgentProxy is a service in CDP 6.1, but in CDP 6.0 it was not. After restoring a 6.0 System State backup, the Registry is restored to a version without the CDPAgentProxy service, and if the Registry backup was combined with other System State components such as WMI, Event Logs, or ActiveDirectory, the restore process cannot continue due to "HttpRequest Error".</p> <p><b>Workaround:</b> There are two workarounds:</p> <ol style="list-style-type: none"><li>1. Connect a CDP 6.0 Agent (6.0.1.37) to the CDP 6.1 (6.1.3.22) appliance containing the desired System State revision, and restore the System State revision to the 6.0 Agent. After restoring, upgrade the Agent from 6.0 to 6.1</li><li>2. Manually install the CDPAgentProxy service before continuing the restore, with the following steps:<ol style="list-style-type: none"><li>a. On a CDP 6.1 Agent machine, restore the 6.0 System State revision.</li><li>b. After the Registry is restored, reboot the machine and log in to it.</li><li>c. Before the CDP Agent UI is automatically launched, start a CMD window and navigate to your CDPAgent binary installation folder, by default: C:\Program Files\SonicWALL\SonicWALL Continuous Data Protection\ </li><li>d. Type the command "CDPAgentProxy.exe /install".</li><li>e. Confirm that the CDPAgentProxy service exists in the Services list.</li><li>f. Start the CDPAgentProxy service.</li></ol></li></ol>	106921

# Release Notes

## Resolved Issues

This section contains a list of issues that are resolved in the SonicWALL CDP 6.1 release.

### Agent Software

Symptom	Condition / Workaround	Issue
The CDP Agent application uses a lot of memory on the agent system.	Occurs when the Agent UI is left running for several days. <b>Workaround:</b> Close the Agent application and restart it.	104591

### Alerts

Symptom	Condition / Workaround	Issue
Alert messages not related to CDP appear on the System > Status page.	Occurs when messages from various Linux packages in the underlying operating system are triggered. CDP 6.1 provides a way to hide these messages by selecting the <b>Suppress non-CDP Alerts</b> option on the Alert tab in the System > Settings page.	101338

### Backup/Restore – Applications

Symptom	Condition / Workaround	Issue
Restoring a System State backup of "File Replication Service" fails.	Occurs when attempting to restore to original location on a Windows Server 2008 R2 system, with two reparse points under a backed up folder, C:\Windows\SYSDVOL.	105396
System State restore fails and the reboot prompt appears again after the computer was rebooted.	Occurs when restoring to original location after making a few changes to system files, on Windows XP and Windows 7.	105369
Backup of a 700 GB SQL database failed.	Occurs when backing up an SQL 2005 deployment of a large database, and, after 27 hours, contact with the CDP appliance is lost.	105361
The discovery process times out, and no user mailboxes are available for selection when configuring a policy.	Occurs when trying to select the mailboxes on a Windows client, and there are 3000 mailboxes. The Exchange default page size limit is exceeded.	105280
The error message "Failed to download application configuration" is displayed when adding an agent application in the CDP Web UI.	Occurs when the CDP appliance is running firmware version 6.1 and the agent is running 6.0 CDP Agent software. Also occurs when the agent is not synchronized with the CDP appliance, such as when the agent does not have CDP Agent software installed or, if it is installed, it is not launched before adding the agent application in the appliance Web UI.	105072
Exchange InfoStore backup failed while uploading files, with the error message 'PacketInput: read past eof'.	Occurs when a User Mailbox backup task runs on the same schedule as the InfoStore task.	105039
Backup tasks can be deleted in the Web management interface when in use.	Occurs when a backup task is included in an Admin Policy, but it can still be deleted.	104279

# Release Notes

Symptom	Condition / Workaround	Issue
No User Mailboxes are available when creating an Application object.	Occurs when using the CDP Agent on a Windows Server 2008 R2 64-bit system with Exchange 2010, and all Exchange related services are running. The issue occurs because CDPAgentProxy is a service in the 6.1 release, and is run by the "Local System" account, which is different from the account that runs the CDP Agent Tool. <b>Workaround:</b> Add the Domain Controller to the Organization Management group: <ol style="list-style-type: none"> <li>1. Open "Active Directory Users and Computers"</li> <li>2. Navigate to "Domain Controllers"</li> <li>3. Locate the domain controller, and add it to the "Organization Management" group.</li> </ol>	103411
During the Active Directory restore process, the msconfig tool must be run manually and the AD system rebooted to safe mode. This is a design change from AD restore in CDP 6.0.	Occurs when restoring Active Directory in CDP 6.1. In CDP 6.0, during the AD restore process, a dialog box provided a <b>MsConfig</b> button to open the msconfig tool, select AD repair mode and reboot the system to safe mode. In CDP 6.1, CDPAgentProxy is now a service and cannot display a dialog to the user. Therefore, the user must run the msconfig tool manually and reboot the AD system to safe mode.	102862

## Backup/Restore – Files and Folders

Symptom	Condition / Workaround	Issue
Restoring folder contents to the original Windows Reparse Point fails if the folder does not exist.	Occurs when the folder was deleted after making the backup, and then the user attempts to restore the folder and its contents to the original location.	104998
Mapped networks drives are not backed up by the Windows Agent.	Occurs when a mapped network drive is selected for backup in the Windows Agent, and is added to a backup task. Other files in the backup task are backed up, but mapped network drives are not. This issue does not occur with the Linux or Mac Agents.	103714
Restoring a single file from any FileSet revision always restores the latest revision of that file.	Occurs when restoring a single file from an earlier revision of a FileSet, but not when restoring the entire FileSet revision or the parent directory that contains the file.	103317
The Administrator File Browser needs to allow users to use the Ctrl key to select multiple files for restore.	Occurs when attempting to restore many files from a backup.	102898

## Installation / Upgrade / Migration

Symptom	Condition / Workaround	Issue
The selected time zone appears to be changed after upgrading.	Occurs when upgrading the CDP appliance from 6.0.5.77 to 6.1. The time zone is displayed incorrectly, but the system time is accurate and is still using the correct time zone.	104320
The migration of data does not finish because the migration fills the CDP appliance hard drive disk completely.	Occurs when migrating data during an upgrade from CDP version 5.1.4 to 6.0.4.74, and the drive has the minimum recommended free space of 20% prior to migration.	99734

# Release Notes

## Reports

Symptom	Condition / Workaround	Issue
The Reports > Disk Space Summary page shows a value in the Quota Used column that is greater than the Quota value, even when the actual quota has not been exceeded.	Occurs when the Quota Used value is based on Size, rather than Size on Disk, even when the Quota Type is set to Size on Disk.	101227

## Scheduling

Symptom	Condition / Workaround	Issue
Backup tasks sometimes run on days that are not selected in the schedule.	Occurs when the schedule is set to run the backup only on certain days of the week or month, but the backup runs daily.	101500

## System

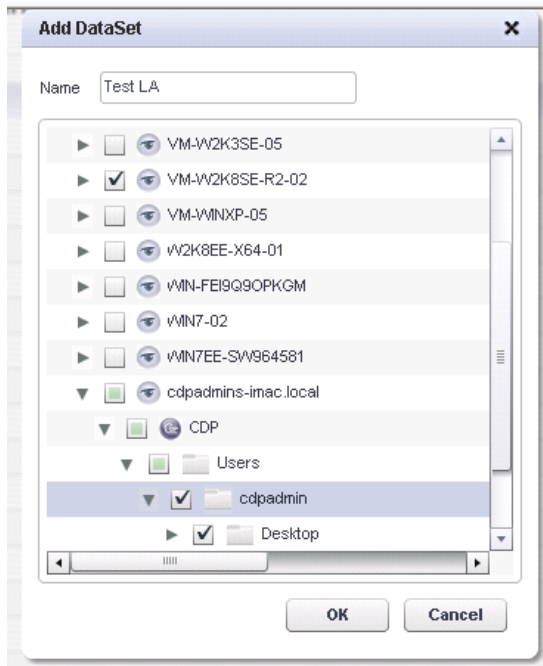
Symptom	Condition / Workaround	Issue
Internal errors are displayed on many pages of the CDP Web management interface.	Occurs when the SQL database used by CDP fails to launch correctly. Can occur after a problematic database shutdown after a migration/upgrade.	104320
The Linux CDP Agent needs to be able to run the Agent Service daemon without installing the Agent User Interface application.	Occurs when running the CDP Agent on a Linux system that only supports a command line interface (CLI). Administrative backup policies can be configured on the CDP appliance Web management interface and pushed to the agent machine. In SonicWALL CDP 6.1, you can install the Linux Agent from the command line with the <b>-d</b> option to install only the Agent Service. The command is as follows, where XX.XX.XX.XX is replaced by the IP address of the default server: <pre>./cdpinstall.sh -d --serverip=XX.XX.XX.XX</pre>	100864



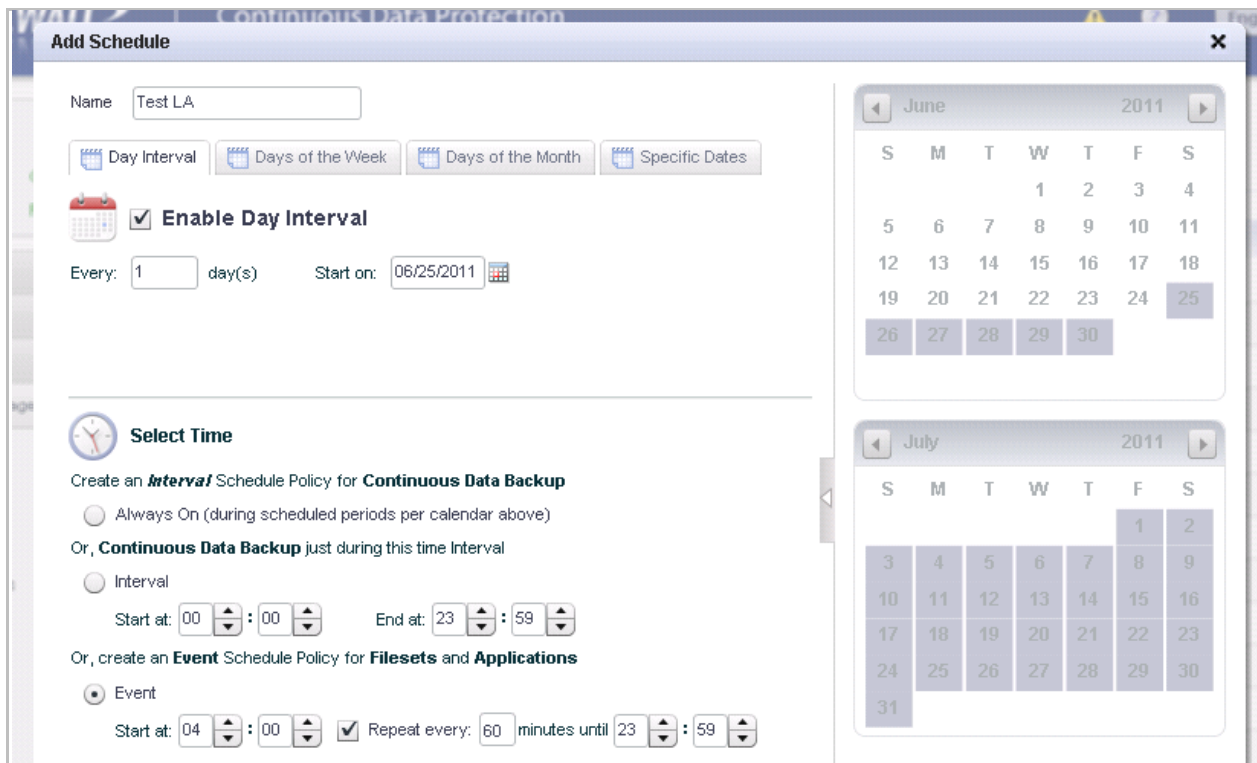


# Release Notes

A DataSet is added from **Data Management > DataSets:**

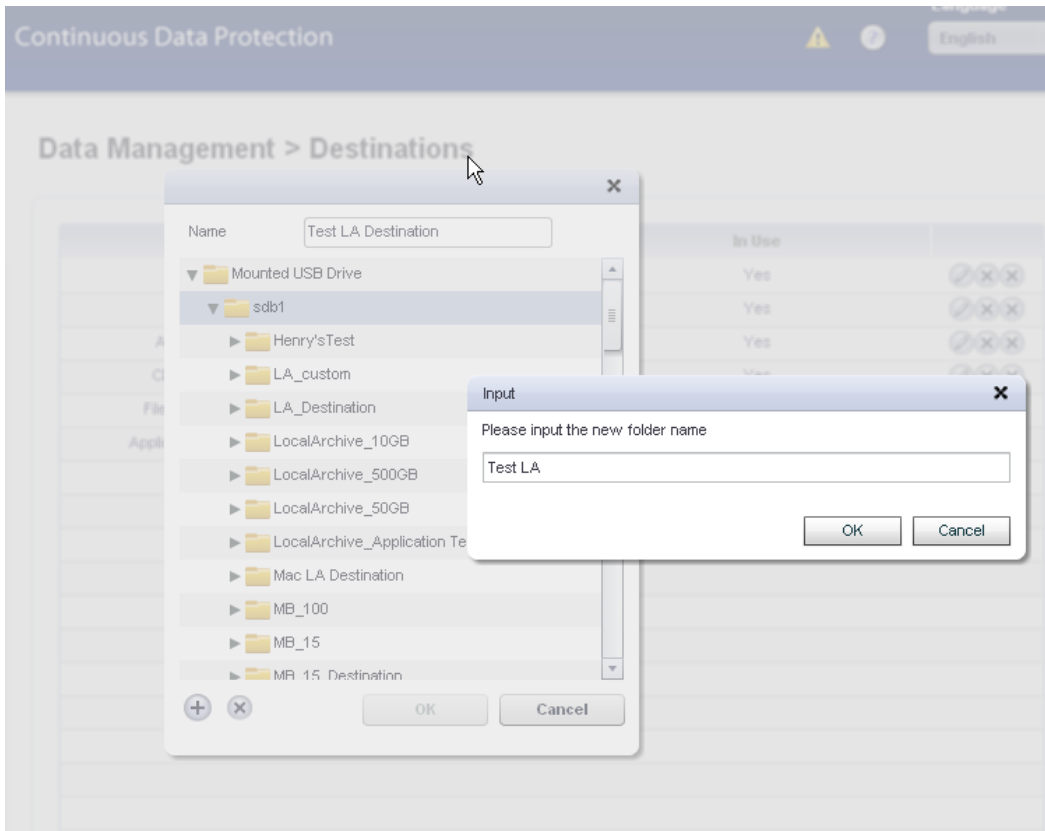


A Schedule is created from **Data Management > Schedules:**

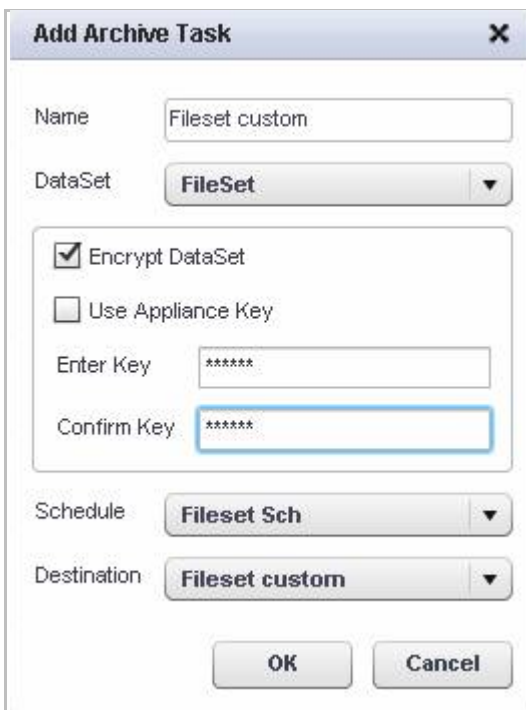


# Release Notes

Destinations are folders on a mounted USB drive, and are added from **Data Management > Destinations**:



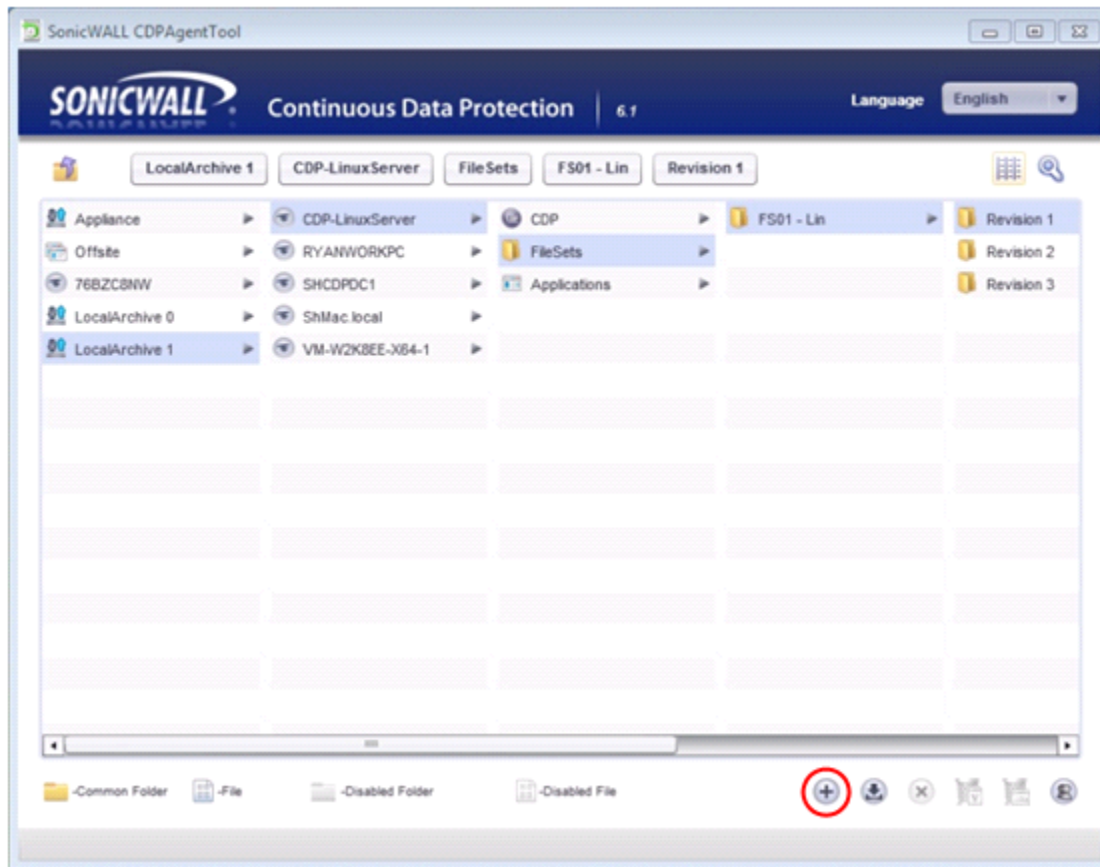
Archive Tasks are created from **Data Management > Archive Tasks**. The data can be encrypted on the USB drive.




# Release Notes

## Local Archive Restoration Integrated to Agent User Interface

The integration of local archiving to the CDP Agent user interface enables an Administrator to conduct a restore from a Local Archive device using the Agent user interface in administrative mode using the Local Archive File Browser.



To restore a local archive from the Agent user interface:

1. Log into the Agent user interface on your CDP client machine.
2. Change to the **Local Archive File Browser**.
3. Insert the USB drive containing the local archive backup that you want to restore into your client system.
4. Navigate to the local archive backup that you want to restore, selecting the Revision.
5. Click the Add button  at the bottom of the screen to begin the restore.

# Release Notes

## Agent Policy Editing from Web Management Interface

Allows the Administrator to manage agent policy including the creation and modification of agent policies via the Web management interface. On the Agents > Policies page, the Web management interface appears similar to the Agent user interface Policies tab, and allows policy editing.



## Agent Push

Allows an Administrator to upgrade agent machines directly from the Web management interface. On the Agents > Manage page, click the **Upgrade** tab to see the options. SonicWALL CDP 6.0 to 6.1 Agent Push updates are not supported when attempting to upgrade version 6.0 Agents from the CDP 6.1 appliance Web management interface. The Agent Push update is a new feature in CDP 6.1, but also requires the existing Agent to be a 6.1 version before it can be automatically updated from the appliance Web management interface.



# Release Notes

## Files Revision Control on Upstream CDP or Cloud Portal

Allows an Administrator to configure policies to store and retain multiple revisions on the Upstream CDP or Offsite Portal. This is available in the Web management interface, when editing a Backup Task from the Policy > Backup Tasks page. Change the value in the **Offsite Versions** field to the number of revisions to be stored.

**Add Backup Task** [X]

Name:

Select Data Type: **Fileset** [v]

Files and Folders: **Empty Files and Folders** [v]

Number of Versions:

Offsite Versions:

Trimming Algorithm: **Delete Oldest** [v]

Offsite: **Send all Files Offsite** [v]

Schedule:

Enable this task in Policy

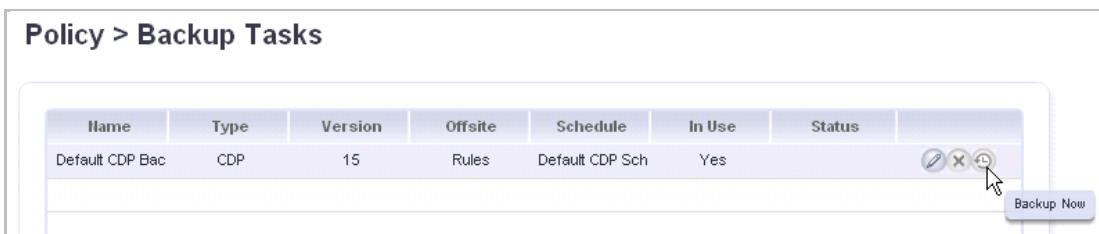
OK Cancel

## Backup Now Function in the CDP Web and Agent Interfaces

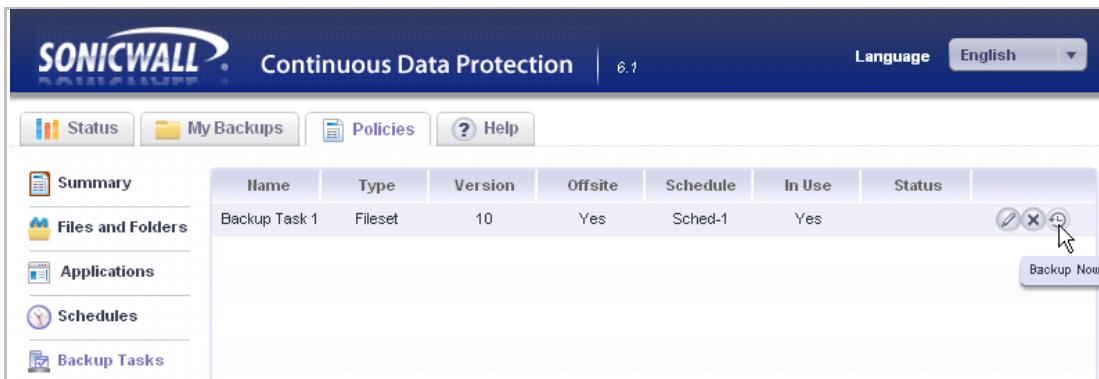
In the Web management interface and Agent user interface, the administrator can click the **Backup Now** button to execute an immediate backup for a selected backup task and a specific Agent. Navigate to the Policy > Backup Tasks page for this feature. This is especially useful in the following cases:

1. A new Application is added to the backup plan.
2. To backup data immediately from a new Agent.

### Web management interface:



### Agent user interface:



# Release Notes

## **Do Not Backup Function in the Web Management Interface**

In the Web management interface, the administrator can execute a **Do Not Backup** option for all Backup Tasks or a specific Backup Task. This is available on the **Policy > Admin Policies** page. Double-click **Do Not Backup** to open the Edit Policy window. All “Do not” permissions are selected when the window opens, but you can adjust the settings. If the administrator selects **Do Not Backup** in the **Policy for New Agents** field, then all new agents that connect to this appliance will not back up anything until the administrator assigns a specific admin policy for each agent.

The screenshot shows the 'Edit Policy' dialog box. The 'Policy Name' field is set to 'Do Not Backup'. The 'Quota' is set to '0' GB, and the 'Quota Type' is 'Size'. The 'Select Continuous Data Protection Task' dropdown is set to 'Default CDP Backup Task'. The 'Select Fileset Tasks and/or Application Tasks' section is empty. The 'Administrator's Agent Override' section has a dropdown set to 'Default Folderset Files and Folders'. The 'Permissions' section has the following checkboxes: 'Do not backup' (checked), 'Do not restore' (unchecked), 'Do not trim' (unchecked), 'Do not delete' (unchecked), and 'Disable policy management' (unchecked). 'OK' and 'Cancel' buttons are at the bottom.

## **Auto-Provisioning of New Agents Connecting to a CDP Appliance**

For a new Agent attempting to connect to a CDP appliance, the administrator can create an auto-provisioning policy on the **Policy > Admin Policies** page that can do the following:

1. Configure the **Do Not Backup** policy for new Agents to allow the Agent to connect without being assigned to a specific Admin Policy.
2. Configure the **Default** policy or a custom policy for new Agents to allow the Agent to automatically connect and be assigned to a specific Admin Policy. For a policy that allows agents the broadest permissions, leave the **Permissions** checkboxes unchecked when adding the policy from Policy > Admin Policies.

# Release Notes

## Enable/Disable Local Management Permissions


An administrator can now enable or disable local management permissions by selecting specific Permissions options when adding or editing a policy on the **Policy > Admin Policies** page.

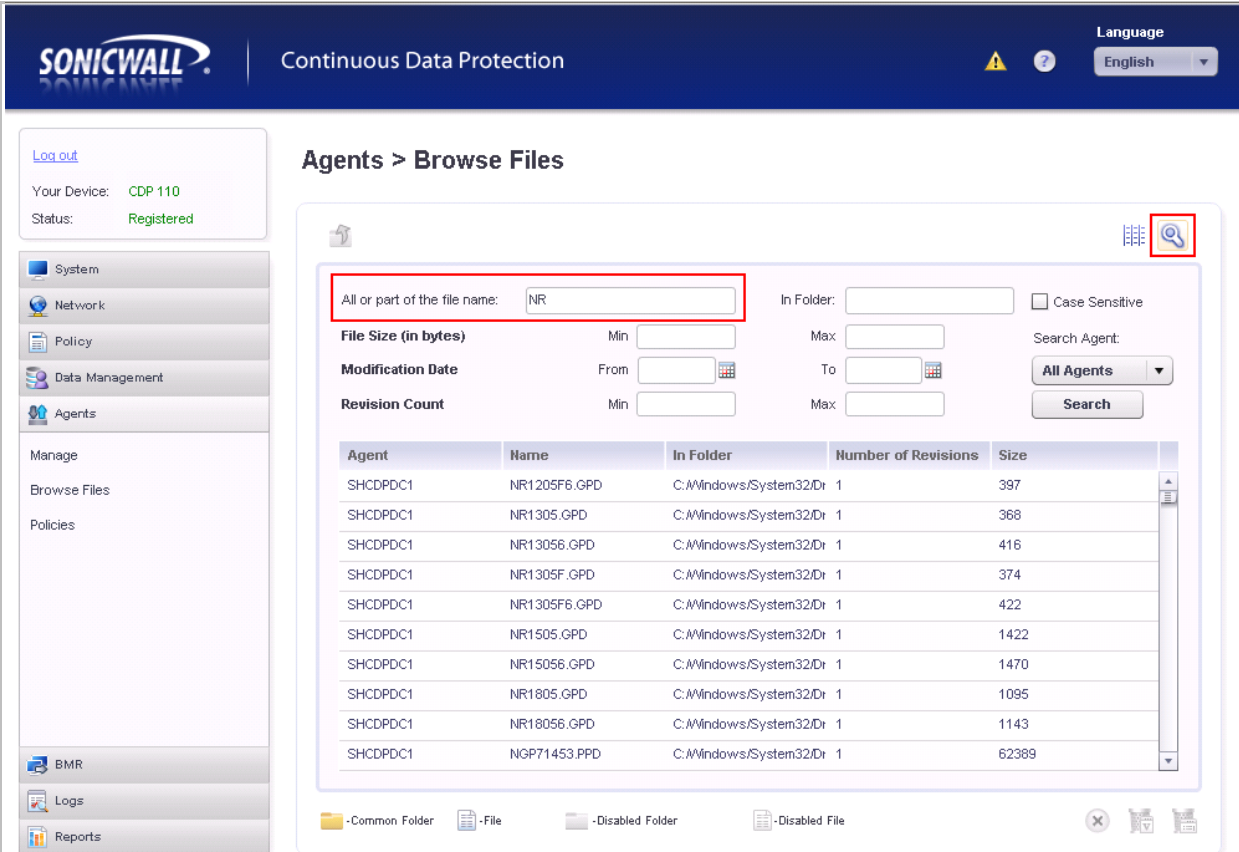
1. Administrators can permit or deny user privileges when creating or modifying an agent-level policy.
2. Administrators have complete control over whether the user of the client machine can delete, trim, or restore files from the appliance.

## Enhanced Search Functionality in the CDP Web and Agent Interfaces

The enhanced search feature provides the ability to restore/delete/trim directly from the search interface. On the Agent, you can restore one or more selected files from downstream, upstream, or offsite CDP appliance in one operation.

### Web Management Interface:

1. In the CDP Web management interface, navigate to **Agents > Browse Files**.
2. Click the  button to display the enhanced search fields.
3. Enter the text to search for in file or folder names, or enter the minimum and maximum file size, date range, or minimum and maximum revision count. You can fill in a value for one or more of these fields.
4. To search for files from a specific Agent, select the Agent in the **Search Agent** drop-down list. To search for files from any Agent, select **All Agents**.
5. Click **Search**.




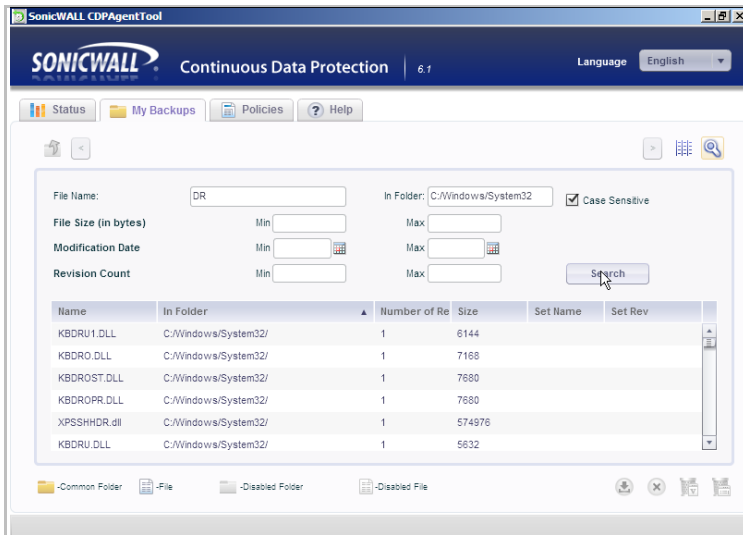
The screenshot shows the SonicWALL CDP Web Management Interface. The top navigation bar includes the SonicWALL logo, 'Continuous Data Protection', and a language dropdown set to 'English'. The left sidebar contains navigation options: System, Network, Policy, Data Management, Agents, Manage, Browse Files, Policies, BMR, Logs, and Reports. The main content area is titled 'Agents > Browse Files'. It features a search interface with a search bar containing 'NR', an 'In Folder' field, and a 'Case Sensitive' checkbox. Below the search bar are filters for 'File Size (in bytes)', 'Modification Date', and 'Revision Count'. A table displays the search results with columns for Agent, Name, In Folder, Number of Revisions, and Size. The table contains 12 rows of file data.

Agent	Name	In Folder	Number of Revisions	Size
SHCDPDC1	NR1205F6.GPD	C:\Windows\System32\Dr	1	397
SHCDPDC1	NR1305.GPD	C:\Windows\System32\Dr	1	368
SHCDPDC1	NR13056.GPD	C:\Windows\System32\Dr	1	416
SHCDPDC1	NR1305F.GPD	C:\Windows\System32\Dr	1	374
SHCDPDC1	NR1305F6.GPD	C:\Windows\System32\Dr	1	422
SHCDPDC1	NR1505.GPD	C:\Windows\System32\Dr	1	1422
SHCDPDC1	NR15056.GPD	C:\Windows\System32\Dr	1	1470
SHCDPDC1	NR1805.GPD	C:\Windows\System32\Dr	1	1095
SHCDPDC1	NR18056.GPD	C:\Windows\System32\Dr	1	1143
SHCDPDC1	NGP71453.PPD	C:\Windows\System32\Dr	1	62389


# Release Notes

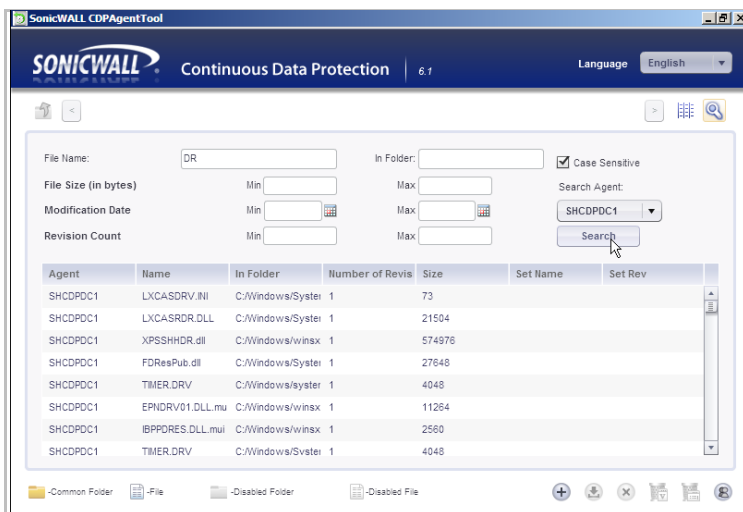
## Agent User Interface – User Mode:

1. In the CDP Agent user interface, click the **My Backups** tab.
2. Click the  button to display the enhanced search fields.
3. Enter the text to search for in file or folder names, or enter the minimum and maximum file size, date range, or minimum and maximum revision count. You can fill in a value for one or more of these fields.
4. Click **Search**. Only your Agent machine is searched.



## Agent User Interface – Administrative Mode:

1. Log into the Agent user interface on your CDP client machine.
2. Change to the **Administrator File Browser**.
3. Click the  button to display the enhanced search fields.
4. Enter the text to search for in the file or folder names, or enter the minimum and maximum file size, date range, or minimum and maximum revision count. You can fill in a value for one or more of these fields.
5. To search for files from a specific Agent, select the Agent in the **Search Agent** drop-down list. To search for files from any Agent, select **All Agents**.
6. Click **Search**.



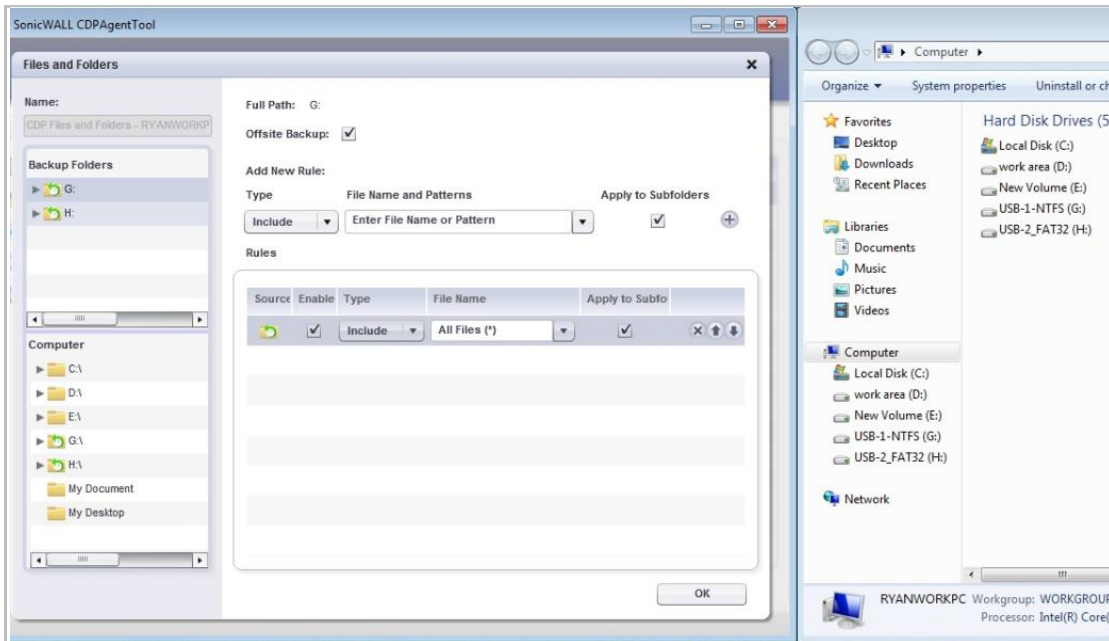


# Release Notes

## Mounted Drive Support

On Windows, users now have the ability to backup/restore on non-directly attached drives including USB and mounted network drives (with proper permission only).

For example, the image below shows the CDP Agent user interface window next to a view of the Windows computer while two USB drives are mounted as drives G and H. The **Files and Folders** window in the Agent UI allows you select the G or H drives, as well as any of the attached drives on the system, to drill down to files or folders that you want to backup.



# Release Notes

## What's New in SonicWALL CDP 6.0?

---

### ***New Administrator and Agent Web User Interfaces***

User interface enhancements and improvements in SonicWALL CDP 6.0 include:

- A single **Web User Interface** available for all platforms (Windows, Linux, Mac) that provides administrative features to control backup and restore functions, system settings, reports and diagnostics, and licensing information
- An easy-to-use **Agent User Interface** that also provides an administrative mode setting
- **Editable Agent Names** for both the downstream and upstream appliances
- **Log Viewer, Support, and Licensing sections** now directly available within the Web UI
- **Enhanced File Browsing** capabilities for downstream, upstream, and offsite
- **Connectivity Tools** to review numerous details such as status and trace route data

### ***SonicWALL CDP 6.0 Feature Summary***

SonicWALL CDP 6.0 allows granular control of the application backup process with continuous protection and scheduled snapshots, ranging from selected files to an entire data volume. New features and enhancements include:

- **Administrative Policy Governance**—Powerful policy-driven backup enables administrators to globally enforce defined backup policies for specified users or groups ensuring only business-relevant data assets are automatically preserved and recoverable for any level of disaster that could cause severe data loss.
- **Granular Backup Control Rules**—Hierarchically executed backup rules enable a sustainable data reduction strategy that intelligently identifies, captures and preserves pertinent business information, optimizes storage and speeds backup while eliminating the costly backup and storage of irrelevant or outdated data.
- **Multiple Backup Methodologies**—By integrating continuous data protection technology with Microsoft Volume Shadow Copy Service (VSS), IT organizations benefit from constant protection plus granular point-in-time snapshots that support data recovery and disaster resiliency, Recovery Point Objective (RPO) and recovery responsiveness.
- **Fileset Backup**—The CDP 6.0 fileset backup methodology combined with data de-duplication and advanced granular versioning and trimming features efficiently captures, catalogues and preserves each backup in chronological versions while excluding duplicate data. This eliminates the inefficiencies experienced by the traditional method of excessively backing up and storing recurring incremental and daily full backup files that overtax secondary storage and result in data loss when historical backup points are rebuilt.
- **Continuous Data Backup**—CDP 6.0 delivers automatic, transparent and policy-based backup, ensuring business critical data is reliably protected. Whether data resides on servers, desktops, laptops or remote systems, CDP continuously monitors and automatically creates a backup every time a change is detected. Unlike most traditional backup products, no user intervention or manual backup tasks are required.
- **Agent-Based Data De-Duplication**—CDP 6.0 eliminates redundant data blocks at the source to drastically shorten backup windows, minimize bandwidth utilization, optimize storage, improve performance and reduce operational costs.
- **Discovery and Recovery of Email Data**—SonicWALL Recovery Manager for Exchange enables administrators to granularly search, compare and restore individual, criteria-specific items—including single messages, multiple mailboxes and public folders hierarchies in Microsoft Exchange® and Lotus Domino®.
- **Windows, Mac OS and Linux Support**—The CDP 6.0 agent software supports mixed-platform environments, including the latest Windows®, Mac OS® and Linux® operating systems.

# Release Notes

- **Broad Microsoft Application Support**—The CDP 6.0 supports the most popular Microsoft® business and client applications including SQL®, Exchange and SharePoint® servers, Active Directory® and Outlook®.
- **Universal System Recovery**—The CDP Universal System Recovery allows you to create an exact image of an entire Windows server or workstation including the operating system files, program files, databases and settings. The wizard-driven interface enables IT administrators to quickly recover an entire system to dissimilar physical or virtual hardware easily, regardless of make, model or installed components.
- **Offsite File Browsing, Auditing and Recovery**—Provides administrators the ability to browse the offsite location at the file level for auditing, legal and compliance purposes, and allow on-demand file-level recovery as needed.
- **Site-to-Site Data Backup**—This feature offers flexible configurations. For example, one primary CDP appliance can backup to a secondary appliance in a unidirectional configuration. That secondary appliance can also backup to the primary appliance in a bidirectional configuration. Alternately, a primary CDP appliance could back up to a secondary appliance, which in turn could backup to a tertiary appliance, and so on, in a serial unidirectional configuration, and even ultimately backup to the original primary appliance in a serial circular configuration. Moreover, multiple CDP appliances may backup to a single CDP appliance in a many-to-one configuration.
- **Local Archiving**—For an added layer of disaster protection, IT can archive the latest version of business-critical data on a local NTFS formatted USB drive and physically transport it to a secure offsite location. Designed to help organizations meet regulatory compliance, local archiving enables administrators to browse archives and restore individual files. Local archiving is available on both upstream and downstream CDP appliances.
- **Agent Quota Tools**—Are available for administrators to use in controlling the backup size and data usage limits for each agent. Two quota strategies are available: How much data is backed up, and how much disk space is used. These amounts will not be exactly the same because of data de-duplication.

## ***Advanced Reporting Features***

Reporting and alert update functions are enhanced in SonicWALL CDP 6.0, including the following:

- **Additional daily reports** that conveniently now include SonicWALL support contract information.
- **Improved report generation** is available with the new ability for agents to dump log information.
- **Robust error reporting** provides broader appliance error handling for visibility of backup operations.

## ***Installation and Registration Enhancements***

- **Remote Installation** in SonicWALL CDP 6.0 enables administrators to provide scalable installation support for deployments of all sizes. Remote agent installation management is completed through the use of a Microsoft Installer (MSI) package. For detailed instructions on setting up remote agent installation on Windows, see the SonicWALL Knowledge Base for this article:
  - How do I push CDP 6 installations via MSI and Group Policy Objects on a Windows Domain?  
<http://www.fuzegna.com/sonicwallkb/consumer/kbdetail.asp?kbid=8703>
- **Appliance Registration** can now be quickly completed via the Web UI.

# Release Notes

## Centralized Management

SonicWALL CDP 6.0 provides greater integration with SonicWALL Global Management System (GMS) and ViewPoint. **Note:** Make sure you are running the SonicWALL GMS/UMA/ViewPoint 6.0 Service Pack 2 patch for SonicWALL CDP 6.0 firmware support.

- **Extensive Administrative Control** of deployed SonicWALL CDP appliances. Administrators can create and push policies down to all deployed SonicWALL CDP appliances.
- **Reporting for Managed CDP Devices** is available in conjunction with SonicWALL GMS 6.0, including detailed agent backup activity, appliance file backup logging, and SonicWALL CDP appliance utilization.

## VSS

In the SonicWALL CDP 6.0 release, SonicWALL has implemented the use of Microsoft's Volume Shadow Copy Service (VSS) for backing up all file sets.

In past releases, it could take significant time for larger files to back up to SonicWALL CDP appliances. With the implementation of VSS in SonicWALL CDP 6.0, file sets can be backed up at more frequent intervals, and with more reliability and stability. As CDP prepares to back up files, they are sent to an alternate VSS-eligible queue. The entire queue is taken at one time as a result of the VSS snapshot. SonicWALL CDP acts as a VSS Requestor at the snapshot trigger time. Microsoft VSS informs the VSS writers to commit changes and shut down for a VSS snapshot. Once the snapshot is complete, SonicWALL CDP begins serially uploading the file backups to the appliance.

### VSS Criteria

- VSS has no visibility to the end user. It is a transparent task from a user's point of view.
- VSS only applies to files on Microsoft operating systems equipped with VSS.
- VSS is supported for backups of files, folders, server applications, and client applications such as Outlook and Outlook Express in the SonicWALL CDP 6.0 release.
- The Volume Shadow Copy Service must be enabled in order for SonicWALL CDP to take advantage of this functionality.
- VSS snapshots are of type FULL.
- VSS for CDP is only supported for Windows 7, Windows Vista, Windows XP, Windows Server 2008, and Windows Server 2003.
- The file system type of the shadow copy storage area and the volume to be shadow copied must be NTFS.

### Fallbacks

- If VSS is not running, is disabled, or is not supported on the operating system, then the regular File Watcher queue is used.
- If a VSS snapshot is attempted and fails, SonicWALL CDP will fall back to the regular File Watcher queue.

# Release Notes

---

## Upgrading to SonicWALL CDP 6.0 and 6.1

---

The CDP appliance must be running a version of CDP 6.0 before upgrading to CDP 6.1.

Before attempting to upgrade your SonicWALL CDP appliance to version 6.0 (or 6.0.x.x), the appliance must be running version **5.1.3.16**. This is the *ONLY* version of the appliance firmware on which the CDP 6.0 migration is intended to be run.

For detailed instructions on upgrading to SonicWALL CDP 6.0, see the *SonicWALL CDP 6.0 Migration Best Practice Guide*, available on MySonicWALL.

For additional information about upgrading to version 6.0, see the following Knowledge Base articles:

- How long will my CDP take to upgrade to version 6?  
<http://www.fuzeqna.com/sonicwallkb/consumer/kbdetail.asp?kbid=8699>
- How much free space is needed to upgrade a CDP appliance to version 6?  
<http://www.fuzeqna.com/sonicwallkb/consumer/kbdetail.asp?kbid=8698>

## Related Technical Documentation

---

Reference the latest technical documentation at the **SonicWALL Technical Documentation Online Library**:  
<http://www.sonicwall.com/us/Support.html>

For more information about SonicWALL CDP, refer to the following SonicWALL CDP Backup and Recovery **product guides**:

- *SonicWALL CDP Administrator's Guide*
- *SonicWALL CDP Agent User's Guide*
- *SonicWALL CDP 6080 Getting Started Guide*
- *SonicWALL CDP 5040 Getting Started Guide*
- *SonicWALL CDP 210 / 220 Getting Started Guide*
- *SonicWALL CDP 110 / 210 Getting Started Guide*

For more configurations and solutions, refer to SonicWALL advanced deployment **technotes** and **feature guides**:

- *SonicWALL CDP Best Practices Guide Technote*
- *SonicWALL CDP 5.1 Configuring Microsoft Exchange Infostore Backup and Restore feature guide*
- *SonicWALL CDP 5.1 Configuring Microsoft Exchange User Mailbox Backup and Restore feature guide*

---

Last updated: 9/10/2011